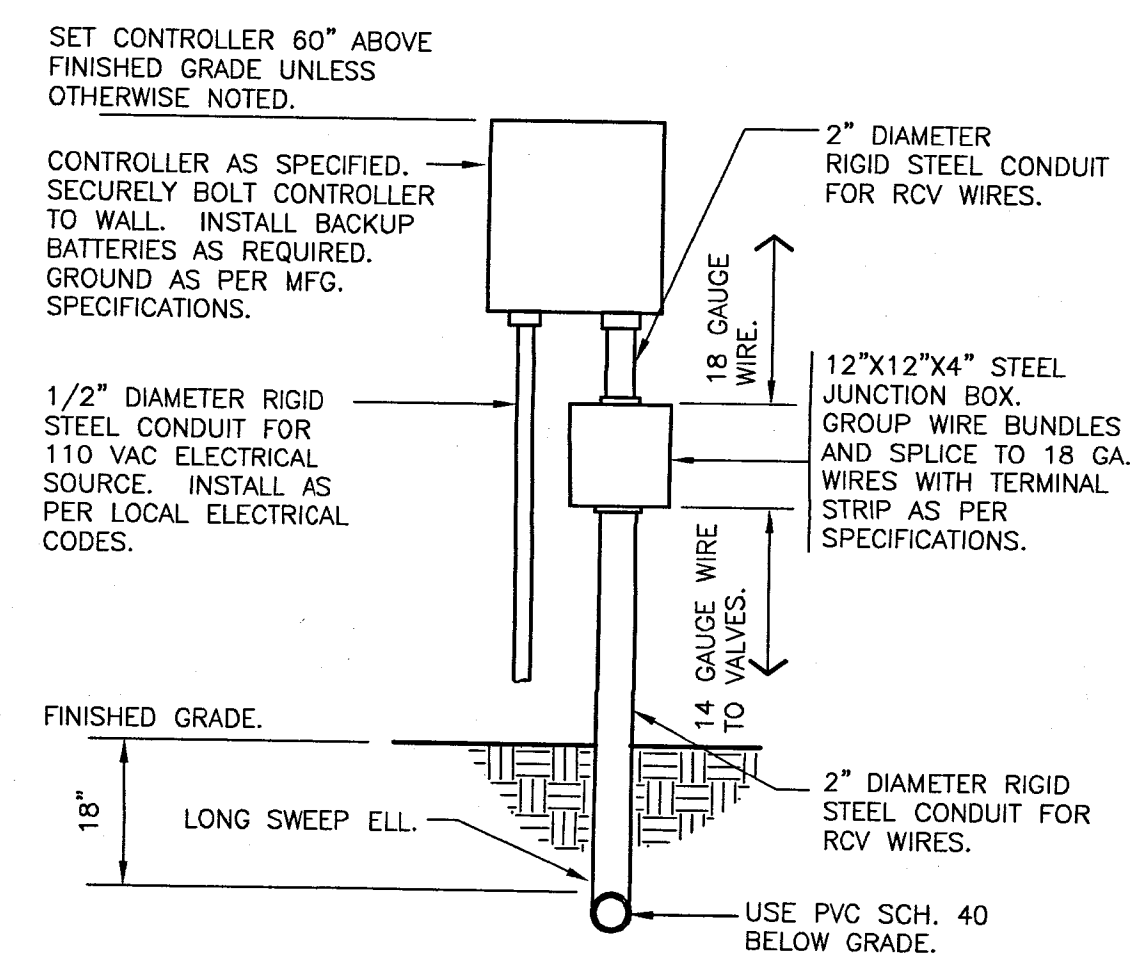
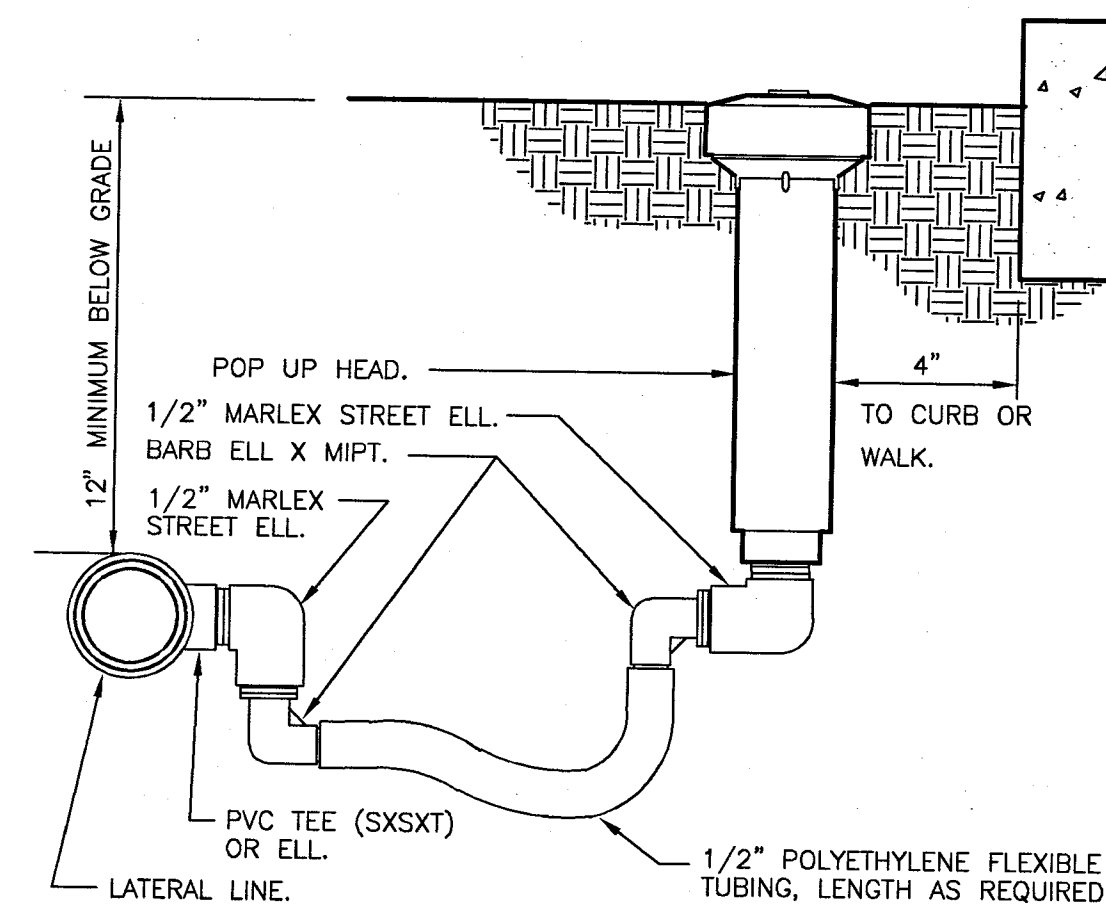
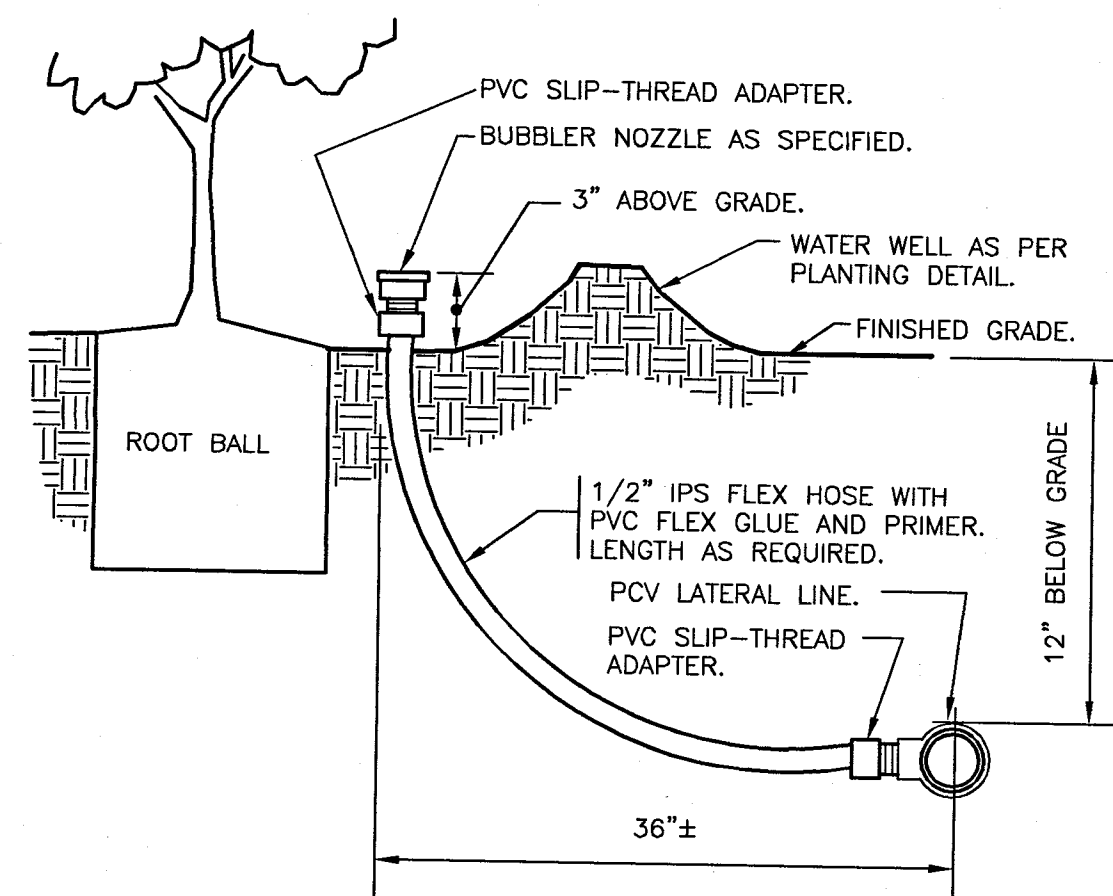
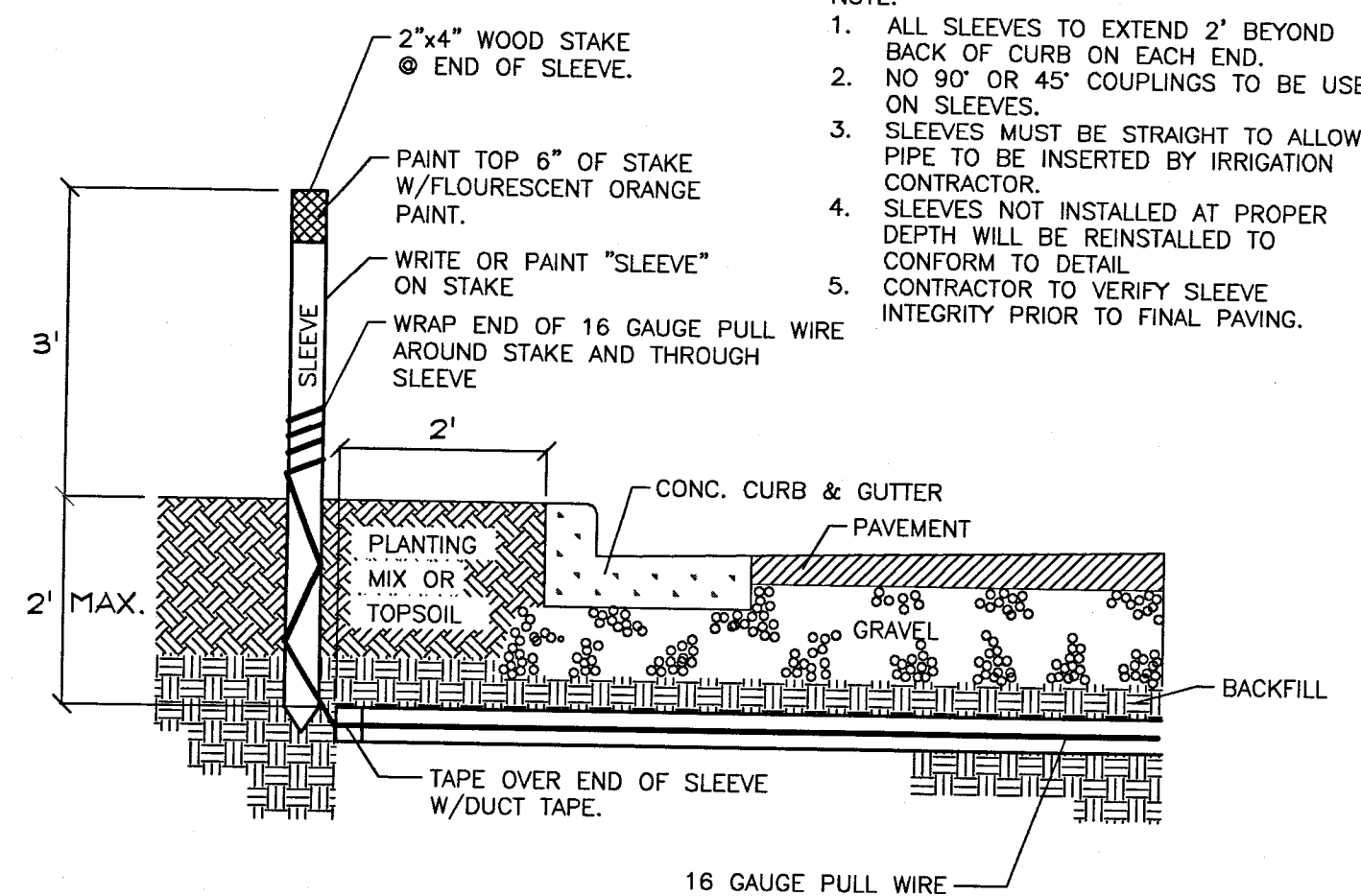
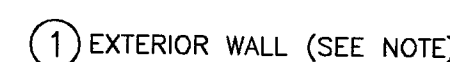


4 BRASS BALL ISOLATION VALVE
1 1/2" = 1'-0"



7 POP-UP SPRAY FLEX ASSEMBLY
3" = 1'-0"



10 IRRIGATION SLEEVING

NOTE:

1. ALL SLEEVES TO EXTEND 2' BEYOND BACK OF CURB ON EACH END.
2. NO 90° OR 45° COUPLINGS TO BE USED ON SLEEVES.
3. SLEEVES MUST BE STRAIGHT TO ALLOW PIPE TO BE INSERTED BY IRRIGATION CONTRACTOR.
4. SLEEVES NOT INSTALLED AT PROPER DEPTH WILL BE REINSTALLED TO CONFORM TO DETAIL.
5. CONTRACTOR TO VERIFY SLEEVE INTEGRITY PRIOR TO FINAL PAVING.

NOTE:
MOUNT SENSOR ON SURFACE
WHERE IT WILL BE EXPOSED
TO UNOBSTRUCTED RAINFALL,
BUT NOT IN PATH OF
SPRINKLER SPRAY. COORDINATE
MOUNTING WITH OWNER AND
ARCHITECT.

Kimley»»Horn

© 2017 KIMLEY-HORN AND ASSOCIATES, INC.
1920 WEKIVA WAY SUITE 200, WEST PALM BEACH, FL 33411
PHONE: 561-845-0665 FAX: 561-863-8175
WWW.KIMLEY-HORN.COM CA 00000696

IRRIGATION DETAILS

AUTOZONE 6365
PREPARED FOR
AUTOZONE

SHEET NUMBER
310

POMPANO BEACH
FLORIDA

--	--	--	--

AAC
PZ20-12000007
2/2/21

AAC
PZ20-12000007
03/03/2020